

## **2000 – Kokanee Mural Unveiled**

Painted mural “Kokanee” by artist Don Makela, 2000.

Vernon Creek is an important spawning area for Kokanee. The outside pictures reflect all of the animals that live along the Vernon Creek.

This mural is installed in the Creekside Park in the Winfield ward of Lake Country.



**Sept 27, 2000 – Davidson Road School parents make long trek to school**

Pixton Road parents along with Okanagan Centre parents who are on the fringes of the 4.8 km walk distances that are being enforced here in the province of British Columbia are determined to have School District #23 trustees address the anomalies of a rural 4.8 km walk to school as opposed to the same regulations being in place on urban areas where sidewalks, lighting and slower speed zones don't jeopardize the safety of those children who walk to school.

We demand that changes be made. The elected officials of School District #23 and its employees need to put the safety of our children at the top of their priority list. We are determined to have this issue addressed, said McKay.

### **2001 - Wastewater Treatment — Phase Two**



Work began in February on Phase 2 of Lake Country's sewer project, as well as an extension of sewer service from the new *Cooper's Foods* store on Beaver Lake Road via Jensen Road and Bottom Wood Lake Road (pictured here) to the Phase 1 works installed at Berry Road.

Source: District of Lake Country "Community Matters" Newsletter April 5, 2001.  
*See also* 1998, 2003.

### **June, 2001 – Building Communities**

The bronze sculpture, *Building Communities*, by Geert Maas was initially installed on Main Street behind The Winfield Shopping Centre before it came to its final place in front of the Municipal Offices.

The 286-pound cast bronze sculpture is a series of stylized faces, which represent different people in the community, the spirit of our people, strength of family, importance of our youth and hope and inspiration for the future.

It took five months to complete. Maas gave the District of Lake Country a bargain at \$25,000, as a project of this nature would cost \$37,500 normally. Part of the funding for the bronze sculpture came from government grants.

Photos: Steve Kidd





### **2001, June 28 - Winfield Elementary School Closes**



Old Winfield Elementary School July 2004

After 78 years in operation, Winfield Elementary School closed as a school on June 28, 2001. After the entire student body sang a song out on the front lawn, with Principal Jodi Nelson on guitar, a dozen doves were released and did a half circle over the school.

The building was put to use housing a dance studio, the Boys and Girls Club and the food bank.

Source: *The Calendar*, July 4, 2001.

### **2002 – “The Lakes” Development**

In January, 2002, The Ministry of Transportation and Highways gave their stamp of approval for R-6 low density cluster housing and commercial zoning in relation to the Pollard’s Pond development.

Source: *The Calendar*, January 16, 2002.



By 2004, the project was well underway. Mr. Derek Trethewey, owner of the Okanagan Land Development Corporation has been involved in many property acquisitions and development in various parts of British Columbia. The development moved steadily ahead and by mid 2004, all but three of the available lots were sold or had offers pending. Lot prices ranged from \$89,900.00 to \$699,900.00.

In addition to setting aside small portions of the development for parks, Mr. Trethewey also donated \$500,000 to Lake Country for a Trethewey Family Water Park in 2004/2005.

Source: “The Lakes” website, July 2005.

See [Trethewey Splash Park](#), Swalwell Park, Lake Country, BC



## 2002, November – Gateway Block

The south end of Main Street is really taking shape with Lake Country Investments moving ahead with Phase Two of their four-phase development.

John Macdonald, president of Lake Country Investments, says half of the new space, dubbed the “Gateway Block”, is leased and is working towards having the entire 19,000 square feet of commercial space rented upon completion.

“We’ve just finalized all the colour,” said Macdonald. “There’s Movie Gallery, a national video rental operation. We’ve also got Your Dollar Store with More, a jewelry goldsmith operation and Mystic Gifts and Creations.”

The lower level, facing Main Street, will be home to Mystic Gifts and the goldsmith while the upper level, facing west and the Coopers Village parking lot, will be the frontage for Movie Gallery and Your Dollar Store with More. A small restaurant will also be included in Phase Two.

Both levels will be home to about 9,500 square of retail space each. “There will be six or seven Main Street stores and five or six on the upper level,” estimated Madconald.

“Since there’s lots of people in Lake Country with artistic backgrounds, we’d like to see a little arts centre there too. Maybe a coffee shop where people could display their art,” he added.

Source: *The Calendar*, November 27, 2002



### **2003 – 2004 – Oyama School Goes Traditional**

Early in 2003 rumors began circulating that Oyama School would be closed and the grade sevens bussed to George Elliot Secondary School in Winfield. The Oyama Parent Advisory Committee led by President Susan Lawrey led the fight to keep the school.

In September of 2004, Oyama School became a “Traditional” school with school uniforms and a focus on basic academic subjects like mathematics and reading. Students are expected to get above average marks. Discipline in terms of mutual respect for each other and teachers are demanded of students.

Source: *The Calendar*, March 3, 2004.

See also: 1905, 1910, 1915, 1935, 1945, 1955, 1960, 1970, and 1975.

### **2003 – Circle of Life Sculpture**

Sculptor Toru Fujibayashi unveiled his ‘Circle of Life’ sculpture in Swalwell Park on October 23, 2003. The sculpture represents the path our lives typically take.

Artist Fujibayashi was commissioned by the Okanagan Thompson International Symposium. The Nakusp artist has been involved in other sculpture symposiums in New Zealand and Colorado.



### **2003 – Dance of Life**

Artist Terry Houston's "*Dance of Life*" celebrates spawning Kokanee and the memory of Saul David Sigal.

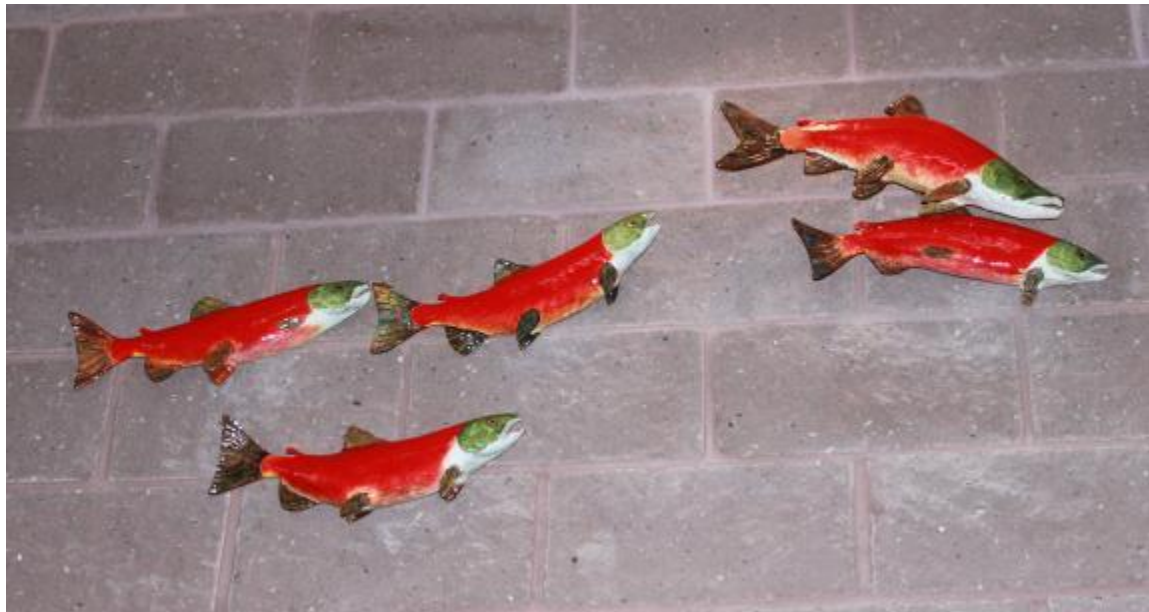
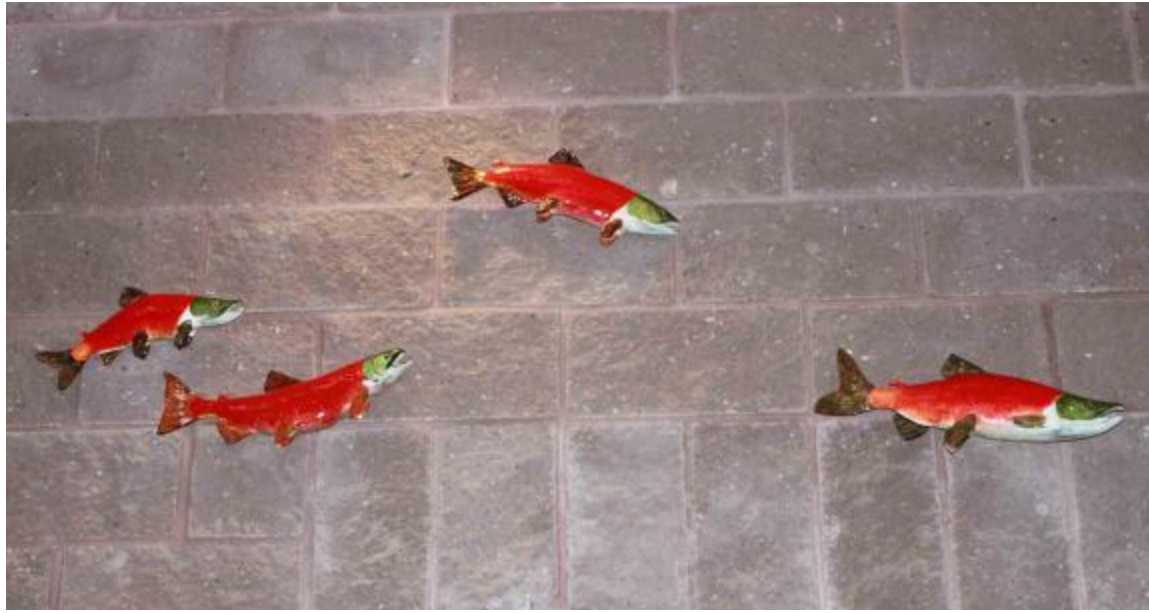
The spawning Kokanee sculpture in the foyer of the District of Lake Country offices was unveiled on May 13, 2003. The 12 Kokanee fish carvings are representations of the brightly coloured spawning fish and were carved and painted by local naturalist and artist, Terry Houston. After a long time observing the Kokanee locally in the age-old ritual of reproduction, Terry was inspired to attempt his multi-piece work titled the *Dance of Life*.

Over a month and a half period, Terry sculpted and finished the six male and six female kokanee representations which are carved from clear spruce wood, harvested from local trees. They are finished in bright red and green acrylic paint and 10 coats of varnish, giving a high gloss, shiny, watery look to the fish.

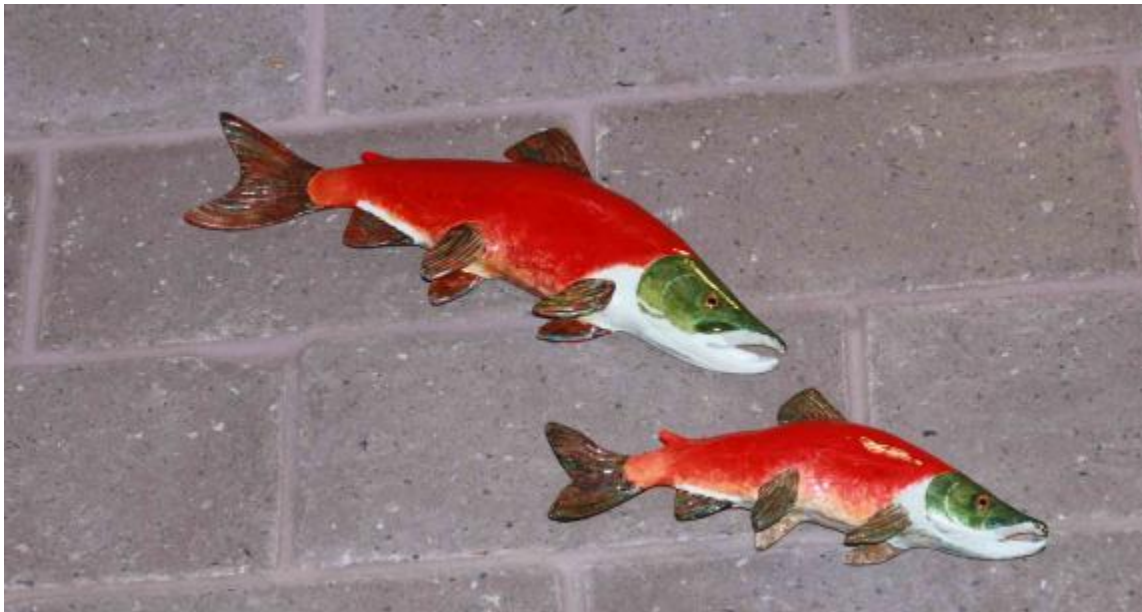
The twelve pieces, captured in various natural swimming positions, are placed in groups across about 20 feet of wall. These are Wood Lake Kokanee, life-sized representations and are each between 12 and 15 inches long.

Donors Jody Lafontaine, Mark & Ardelle Lafontaine, Dianne Smith, Samuel Terrance Sigal, Jacob Forrester Sigal, Terry & Heather Houston, Danny Zucchet, Ross Kent, Cathy Zucchet and Holiday Park Resort have dedicated this beautiful piece of art in memory of Saul David Sigal.

Source: *The View*







### **March 2007 - Calendar Publisher Retires**

It is the end of an era for *The Calendar* newspaper in Lake Country. For nearly thirty years, Jack McCarthy has owned and published this newspaper and earlier this week he made the decision to sell it to the Black Press Newspaper Group.

*The Calendar* has already been in a long-term relationship with its new owner as the newspaper is printed at the Kelowna Capital News building, which is owned by the Black Press.

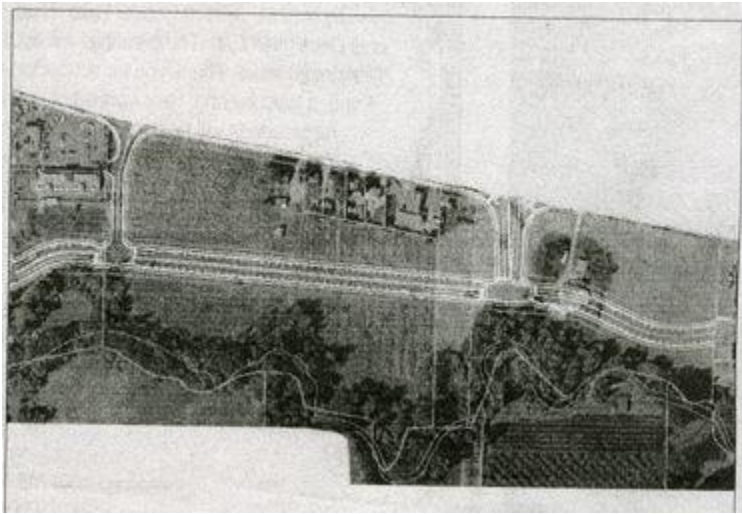
Don Moores, President of the Black Press B.C. South division, expresses his admiration for McCarthy's contribution both to the media industry and his community. As one of the few

remaining independent newspaper owners in the province, McCarthy has been publishing his own unique product since 1979. He has continuously supported Lake Country through his community coverage and as a volunteer in several organizations.

It is Black's philosophy that a newspaper should reflect the community it covers. "We intend to continue on with that philosophy," he says. Things are expected to carry on into the future, with *The Calendar* and *Weekender* publications continuing as normal.

Source: *The Calendar*, Wednesday, February 28, 2007

### **2003 - Wastewater Treatment — Main Street**



R and L Excavating began work in late November, prepping the land in order to begin installing sewer pipe under the area already dedicated for Main Street.

Adding the sewer line this year was not something the District had planned but when Winfield Plaza started to have trouble with their septic fields, and were considering using their own money to tie into the sewer system at the south end, the District saw an opportunity to go ahead and run the line from the IGA to the Plaza. By running the sewer line north, the Plaza can use gravity rather than pumps to move waste material through the pipe. The District has a 20-metre right-of-way running between Hill Street to the IGA and along a portion of Pollard Road. This land will eventually be Main Street with 15 metres from the top of the bank along Middle Vernon Creek for trails.

Winfield Plaza will pay as much as \$91,000 in associated costs, while the District of Lake Country will pay \$25,000 with money left over from grants which funded the Woodsdale sewer project.

Source: *The Calendar*, December 3, 2003

See also 1998, 2001.

### **October 23, 2004 – Sculpture “Dancing Goose” unveiled**

A marble sculpture called “Dancing Goose” by Ede Axelson was unveiled in Beasley Park on October 23, 2004. Ede Axelson donated her sculpture after carving it specifically for Lake Country. The artist carved the sculpture from marble left over from the 2002 Sculpture Symposium. The sculpture was originally supposed to go in the water at Kaloya Park but there were complications with the approval to go into the Regional Park. Axelson says that she has happy memories of spending summers on the beaches near here as a child.

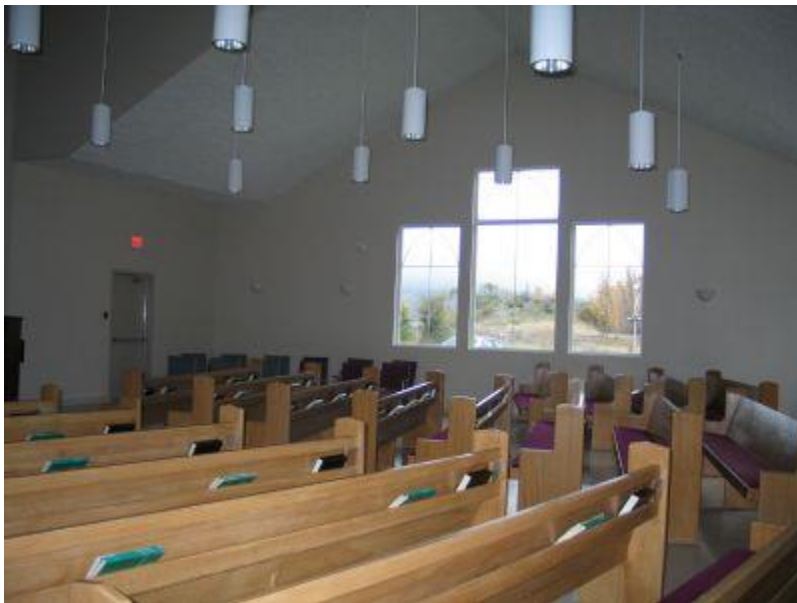


### **October 31, 2004 – Lake Country United Church**



After a decade of planning, the Winfield United Church, now the Lake Country United Church, celebrated its first services in its new building on Woodsdale Road. After selling its former building to the congregation of the Lake Country Christian Centre in 2002, the congregation of the United Church have been worshipping in the Seniors' Centre.

The long established United Church Thrift Shop began moving from the Berry Road location on November 28 and plans to reopen in the new premises on Woodsdale Road on November 3, 2004.







### **January 11, 2005 – Sailing Club signs agreement**

The Lake Country Sailing and Boating Association has signed an agreement with the District of Lake Country to develop Marshall Park as a non-motorized boating site complete with launch ramp, boat storage compound and picnic area.

Source: *The View*, January 20, 2005





## **2005, July 1 – Phases of Time and the Town Clock**

### **Phases of Time and the Town Clock**

On July 1st 2005, a small crowd gathered around while harpist Kate Gibson Oswald played and the Town Clock sculpture was officially unveiled. The hands, now painted a lighter shade, are clearly visible on the face of the clock. Artist Ede Axelson had a few words to say about the meaning of her artwork:



“The original of this sculpture was centered on the concept of time. The mark of time is all around us. Its passage is recorded in the rings of a tree, a fossil in limestone, the mountains and valleys we call home. Nature offers sundials and calendars at every turn.

This sculpture represents the natural indicators of time passing as seen in the seasons; the migration of birds (and the birdlike creations on top of each number demonstrate, time really does fly by), and the reflection of the setting sun on the rippling waves of our lakes. It represents the mountains and valleys, but when read from left to right it also forms the Roman numerals MMV with two of the pillars crossed to form an X. This is to commemorate the 10th year of Lake Country in the year 2005. The clock itself represents the sun and moon, perhaps our most obvious indicators of time passing. On the face are images of some of the industries of this area.

The sculpture is a small mark in time and one that I hope will stand the test of time.”

Sources: *The View*, July 7, 2005; Public Art in Lake Country by Sharon McCoubrey in *Spirit of Lake Country. Heritage and Culture*. Lake Country, BC: Lake Country Museum and Archives, 2011; Telephone conversation with Ede Axelson, January 2012.







### **October 2006 – Pair in Love**

Pair in Love is one of four marble sculptures commissioned by the Public Art Commission, originally to commemorate the tenth anniversary of the incorporation of the municipality of Lake Country. Problems in getting the marble blocks from the quarry to Swalwell Park where the sculptures were carved delayed the work until the summer of 2006.

Moriyuki Kono, an artist from Abbotsford, in accordance with the theme of celebrating the tree fruit industry, created Pair in Love. The work was unveiled in Swalwell Park on October 1, 2006. At that time, the ‘stems’ had not yet been attached but were placed after the sculpture was located to Pioneer Park in Oyama.

Photos by Steve Kidd





### **October 2006 – Perfect Pair**

Perfect Pair by Chris Malmkvist, is one of four marble sculptures to be commissioned by the Public Art Commission to commemorate the tenth anniversary of the incorporation of Lake Country in 1995. Problems with transporting the marble from the quarry to Swalwell Park where the sculptures were carved, delayed the work until the summer of 2006.

Chris Malmkvist, a local painter, sculptor and print maker, lives in Carr's Landing. He made the sculpture in accordance with the theme of celebrating the tree fruit industry. It is the first commissioned public sculpture to be installed in the Carr's Landing Ward and resides at Coral Beach Park.

Photos by Steve Kidd









### **October 2006 – The Picker**

The Picker by Dan Irvine, is one of four marble sculptures to be commissioned by the Public Art Commission to commemorate the tenth anniversary of the incorporation of Lake Country in 1995. Problems with transporting the marble from the quarry to Swalwell Park where the sculptures were carved, delayed the work until the summer of 2006.

Dan Irvine, a sculptor from Vernon, carved the work in accordance with the theme of celebrating the tree fruit industry. On the front is a figure picking fruit representing the fruit production. The back has bas-relief carvings of a paddle wheeler and a barge representing transporting the fruit. There are also carvings of orchards and packinghouses surrounding the main themes. Irvine worked with the natural cracks in the marble to create his work.

The sculpture is installed at Okanagan Centre Park (home of the Lake Country Museum) in Lake Country.

Photos by Steve Kidd.





### **October, 2006 – Funky Pear**

Funky Pear by Ede Axelson, is one of four marble sculptures to be commissioned by the Public Art Commission to commemorate the tenth anniversary of the incorporation of Lake County in 1995. Problems with transporting the marble from the quarry to Swalwell Park where the sculptures were carved, delayed the work until the summer of 2006.

Ede Axelson, a local artist, has made other sculptures for Lake County (see Town Clock, Phases of Time and the Dancing Goose). Axelson carved her sculpture in accordance with the theme of celebrating the tree fruit industry. One of the workers at the local packinghouse told her that they sometimes got pears that looked like her sculpture but they threw them away! She has called the

work Funky Pear because it looks like a pear ‘with attitude’. The metal stem and leaf was fixed in place when the sculpture was placed in the south end of Creekside Park. Funky Pear currently resides in Swalwell Park.

Sources: *The View*, July 7, 2005; Public Art in Lake Country by Sharon McCoubrey in *Spirit of Lake Country. Heritage and Culture*. Lake Country, BC: Lake Country Museum and Archives, 2011; Telephone conversation with Ede Axelson, January 2012. Photos by Steve Kidd.







**October, 2006 - God's Totem at Jack Seaton Park**



The front entrance to Jack Seaton Park got a new face lift with the installation of a new gate, landscaping upgrades and an addition to the sign that marks the entrance. Lake Country Crane Service owner Bob Yunick and Seaton Park board directors Jack McCarthy and Lawrence Saukarookoff erected a new corner-post on the existing sign. Dubbed 'Gods Totem' the spruce log that is covered from end to end with burls, was donated to the park by Larry and Carolyn Hoyle who recently sold their Boleen Lake Resort. The Hoyles found the attractive log a number of years ago and wanted to donate it to stand in one of our local parks.

Source: *The Calendar*, November 1, 2006.

### **March 2007 - Calendar Publisher Retires**

It is the end of an era for *The Calendar* newspaper in Lake Country. For nearly thirty years, Jack McCarthy has owned and published this newspaper and earlier this week he made the decision to sell it to the Black Press Newspaper Group.

*The Calendar* has already been in a long-term relationship with its new owner as the newspaper is printed at the Kelowna Capital News building, which is owned by the Black Press.

Don Moores, President of the Black Press B.C. South division, expresses his admiration for McCarthy's contribution both to the media industry and his community. As one of the few remaining independent newspaper owners in the province, McCarthy has been publishing his own unique product since 1979. He has continuously supported Lake Country through his community coverage and as a volunteer in several organizations.

It is Black's philosophy that a newspaper should reflect the community it covers. "We intend to continue on with that philosophy," he says. Things are expected to carry on into the future, with *The Calendar* and *Weekender* publications continuing as normal.

Source: *The Calendar*, Wednesday, February 28, 2007

### **August 26, 2007 – CentrePiece 2007**

CentrePiece 2007, the first one after the total renovation of space and exhibits at the Lake Country Museum, had the theme of “A Century of Community” with the focus on the role of the Japanese pioneers. There were special exhibits, food and entertainment. The Japanese Consul General, Mr. Seichi Otsuka visited and made a speech in honour of the Japanese pioneers and the re-opening of the Museum. The entertainment included a demonstration by Bernice Gunn of apple wrapping and dancing and drumming by the group Yamamiko Taiko. Many descendents of the original Japanese pioneers travelled to attend.







This plaque is dedicated with honour and respect to the Japanese settlers who began arriving in the Okanagan Valley around 1900. Many originally came as agricultural labour, then purchased or leased their own land in the new communities of Winfield, Oyama and Okanagan Centre. They became a key part of a thriving agricultural industry. Some rising to leadership in the industry and community. Second and third generation children grew up and integrated into the community. The descendants of those original settlers continue to be a vital and

### **June 28, 2008 – Museum Tea Room Opens**

After several years of planning, a Tea Room is open at the Lake Country Museum. It is operated by the team of Dave and Christina Pankratz that already has a good reputation for *Mr. D's Gourmet Cheesecakes*. The starting hours of operation are Thursday to Sunday, 10:00 a.m. to 9:00 p.m. The philosophy of the *Lakeside Museum Tea Room* includes making minimal garbage so there are no Styrofoam cups, no plastic cutlery or paper plates; food and drink are served on glass and china. The food served is locally grown, as much as is possible, or made by Dave and Christina.



NB: In 2009 the operation of the tea room was assumed by Dawn and Vic Larden who operate it as *OK Patio Café*. In 2011 the operation of the [OK Patio Café](#) was assumed by Sharon Brooks.





**2015: – Okanagan Rail Corridor borrowing goes to referendum**







March 4, 2015

#### News Release

Lake Country, BC – Mayor and Council initiated a referendum on Tuesday, March 3rd for approval to borrow up to \$2,615,000 to fund the purchase of a 50 per cent share of the 16 kilometres of the Okanagan Rail Corridor within the District boundaries.

“It is critical for all residents to come out to vote, to ensure they have their say in shaping our community’s future and to be informed in making that decision,” said Mayor James Baker.

Photographs courtesy of the [Okanagan Rail Trail Initiative](#).



**June 2, 2015 – Okanagan Rail Trail**

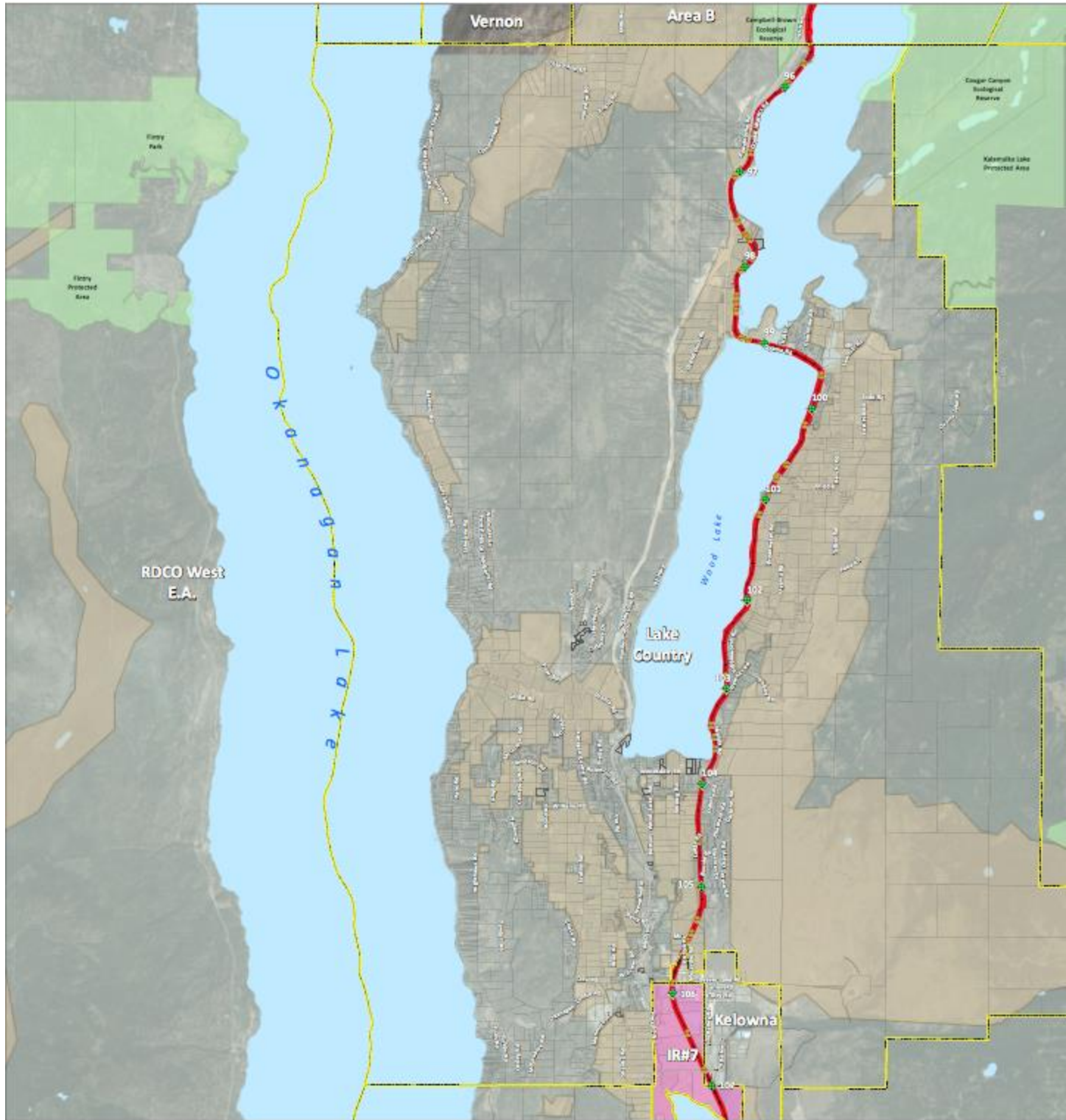




On June 2, 2015 the City of Kelowna gained title to 50 km of discontinued rail line on behalf of four jurisdictions: Kelowna, the District of Lake Country, the Regional District of the North Okanagan and the Okanagan Indian Band (OKIB). The original asking price was 50 million dollars. The total negotiated cost was 22 million dollars with Kelowna issuing a charitable donation receipt to the Canadian National Railway (CNR) for 23 million dollars. The provincial government contributed 7.2 million dollars towards the purchase but took no equity position in the project.

This deal was six months in the making. On December 1, 2014 *The Morning Star*<sup>1</sup> reported that the four jurisdictions had signed a negotiated sales and purchase agreement for the discontinued rail line.





The Lake Country portion of the Rail Trail.

In February 2015 Lake Country Municipal Council was prepared to borrow 2.6 million dollars to pay for fifty percent of the 16 km that runs through Lake Country unless a tenth of the voters objected in an Alternative Approval Process. Nine hundred and sixty voters did object, citing

various concerns — a proposed rise in property taxes, the impact on some affected groups bordering the land and unknown future costs for development and maintenance.

A referendum was scheduled for April 25, 2015 and both the Yes and the No groups waged vigorous campaigns. A record turnout of voters (47% of all eligible voters) supported the borrowing bylaw by

almost 3:1.

Following that, the OKIB applied for an injunction to stop the sale. B.C. Supreme Court Justice Meyers ruled on June 1, 2015 that the OKIB claim did not meet the three-part test that merits an injunction and the injunction was not granted.

The corridor is a strip of land about the width of a two-lane road running from Okanagan Lake at Kelowna through agricultural land along Duck, Wood and Kalamalka lakes to Coldstream, just south of Vernon. The agreement stipulates that the CNR will attempt to remove the rail infrastructure from the corridor for salvage by the end of 2015.<sup>2</sup>

<sup>1</sup> “[Deal reached with CN for Okanagan Rail Trail](#),” *The Morning Star*, December 1, 2014.

<sup>2</sup> The District of Lake Country website *Okanagan Way*.

Source of photographs and map: the District of Lake Country, the [Okanagan Rail Trail Initiative](#) and Michael Hazen (member of the Lake Country Rail Trail Action Team) for the YES photo.

### **January 16, 2016 – Dairy Queen Opens in Winfield**

Kelly Leach and Craig Misfeldt opened a Dairy Queen restaurant in Lake Country at 100474 Highway 97 on January 16, 2016. The Dairy Queen has 38 seats, a 16 seat patio and 45 staff.



*Kelly Leach and Craig Misfeldt*

The first 100 people to buy a Dairy Queen cake were offered a free blizzard every week for a full year.



Leach and Misfeldt plan to keep the Dairy Queen open Monday through Sunday from 10:30 a.m. to 10:00 p.m. each day.